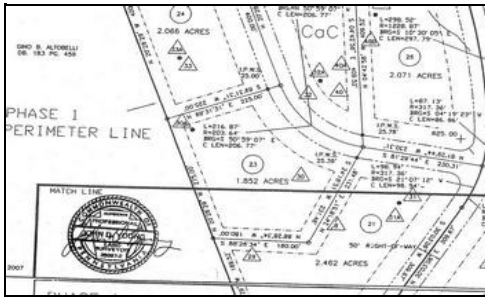


Apex Realty Group

(814) 641-2739

January 24, 2012



Address: 23 Paradise Point on Trough Creek
James Creek, PA 16657

List Price: \$45,000
Listing #: 1009112

Status: Active
MLS Area: Trough Creek

Wooded lots within 4 miles of Tatman Run Raystown Lake Recreational Area. Access to common open space with development with frontage on Trough Creek & walking distance to Rothrock State Forest. Great building site for your year-round or vacation home.
Comments: From Rt. 26, take Rt. 994E approx. 7 miles to Newburg, turn left onto T379 (Paradise Point Rd), go approx. 1 mile to lots on left. **Wooded lots within 4 miles of Tatman Run Raystown Lake Recreational Area. Access to common open space with development with frontage on Trough Creek & walking distance to Rothrock State Forest. Great building site for your year-round or vacation home.**

Property Information				Property Features
Est Acres:	1.85	Gross Taxes:		Level
Lot Size:	1.85 Acres	Tax Class:		Mountain View
Frontage Ft:		Tax Yr:	NYA	On Private Rd
Depth Ft:		Assessments:		Prot Cov
Elem School:	Tussey Mtn	Water Type:	None	Rolling
JH/Mdl School:	Tussey Mtn	Sewer Type:	None	Semi-private
Sr High School:	Tussey Mtn	Fuel Type:		Southern Exp
Region:	Todd	Flood:	No	Valley View
S-T-R:	- -	Zoning:	None	Wooded
Possession:		Plat:		Year-rnd Access
Terms:		Parcel:		
Abstract Loc:		Latitude:		
Assessed Value:		Longitude:		
Legal Description: Part of TP# 49-06-04 DBV 865-107				

