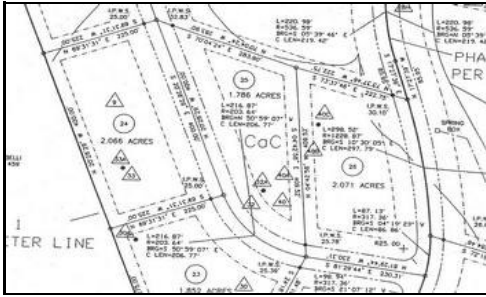


Apex Realty Group

(814) 641-2739

February 24, 2009



Address: 25 Paradise Point on Trough Creek
James Creek, PA 16657

List Price: \$45,000
Listing #: 1009113

Status: Active
MLS Area: Trough Creek

Wooded lots only 4 mi. of Tatman Run Raystown Lake Recreational Area. Access to a common open space in the development that offers frontage on Trough Creek. Walking distance to Rothrock State Forest. Great site for your vacation or year-round home.

Comments: From Rt. 26, take Rt. 994E approx. 7 miles to Newburg, turn left onto T379 (Paradise Rd), go approx. 1 mile to lots on left. Wooded lots within 4 miles of Tatman Run Raystown Lake Recreational Area. Access to a common open space within the development that offers frontage on Trough Creek. Walking distance to Rothrock State Forest. Great building site for your vacation or year-round home.

Property Information	Property Features
Est Acres: 1.78	Level
Lot Size: 1.78 Acres	Mountain View
Frontage Ft:	On Private Rd
Depth Ft:	Prot Cov
Elem School: Tussey Mtn	Rolling
JH/Mdl School: Tussey Mtn	Semi-private
Sr High School: Tussey Mtn	Southern Exp
Region: Todd	Valley View
S-T-R: - -	Wooded
Possession:	Year-rnd Access
Terms:	
Abstract Loc:	
Assessed Value:	
Legal Description: Part of TP# 49-06-04 DBV 865-107	
Gross Taxes:	
Tax Class:	
Tax Yr: NYA	
Assessments:	
Water Type: None	
Sewer Type: None	
Fuel Type:	
Flood: No	
Zoning: None	
Plat:	
Parcel:	
Latitude:	
Longitude:	